

## SIGNAGE INFORMATION SHEET

**NOTE:** Specifications and figures are provided from Accessible Design for the Built Environment, Registered trade-mark of Canadian Standards Association, 2004; Canadian Standards Association, 5060 Spectrum Way, Suite 100 Mississauga, Ontario L4W 5N6. Measurement Scale used: 25.4 mm = 2.54 cm = 1 inch

---

### Location

All signage including electronic display monitors shall be –

- Consistently located; and
- Positioned to avoid shadow areas and glare.

### Configuration of signs

Signage including electronic display monitors shall –

- Have a glare-free surface;
- Be of uniform design;
- Be consistently shaped, coloured and positioned when used to give the same type of information within the same facility; and
- Be colour-contrasted with its background.

### Characters

Characters on signs shall -

- Be sans serif;
- Have Arabic numbers;
- Have a width-to-height ratio between 3:5 and 1:1;
- Have a stroke-width-to-height ratio between 1:5 and 1:10;
- Be colour-contrasted by at least 70% with its background (See Figure 1 on following page);
- Have the character height relative to the intended viewing distance comply with Table 1; and
- Use an upper case “X” for character measurement.

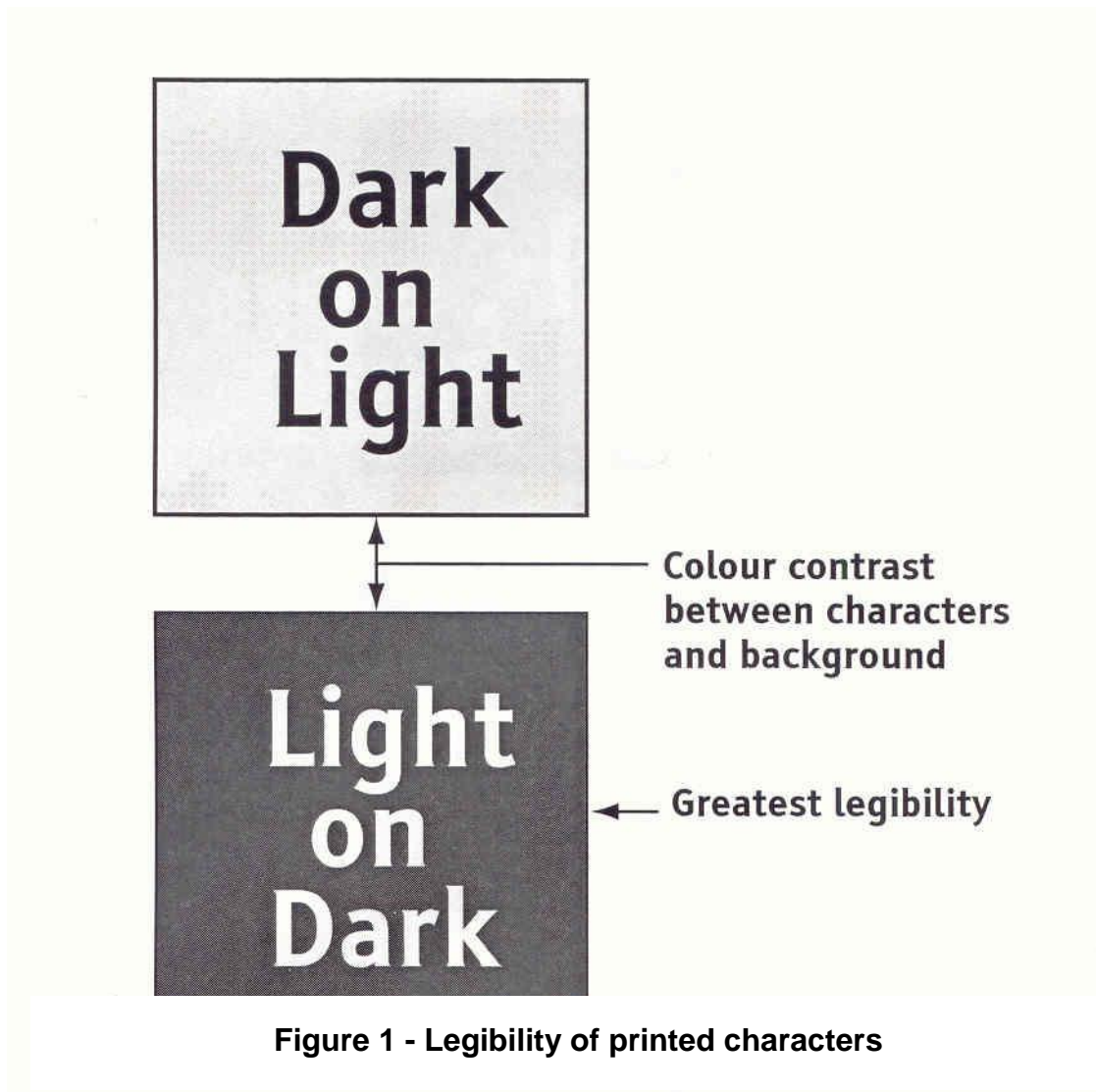


Table 1 – Character height relative to viewing distance

<i>Minimum character height (mm)</i>	<i>Maximum character height (mm)</i>
25	750
50	1500
75	2250
100	3000
150	4500
200	6000
250	7500
<b>300</b>	900

### **Tactile Signs (See Figure 2 on following page)**

Generally speaking, tactile markings shall supplement the text of –

- regulatory signs such as prohibition and mandatory signs;
- warning signs, such as caution or danger signs; and
- Identification signs, such as rooms, titles, names and numbers.

On tactile signs, letters and numerals shall be

- Raised 0.8 to 1.5 mm above the surface;
- Sans serif;
- 16 to 50 mm in height;
- accompanied by Grade 1 Braille near the bottom edge of the sign; and
- colour contrasted with the background by at least 70%.

### **Pictograms and Symbols**

On tactile signs, pictograms and symbols shall be

- raised 0.8 mm above the surface;
- placed on a sign at least 150 mm in height;
- accompanied by the equivalent description in Grade 1 Braille placed directly below the pictograph or symbol; and
- be colour-contrasted with the background by at least 70%.

### **Location of Tactile Signs**

A tactile sign shall

- be mounted on the wall beside the latch edge of the door if used to identify the door;
- where applicable, have the leading vertical edge  $150 \pm 10$  mm from the door jamb;
- be mounted on the nearest adjacent wall where double-leaf doors are used or no wall space adjoins the door's latch edge;
- allow the person to approach the sign within 100 mm without encountering protruding objects or standing within a door swing; and
- have a clear wall area around the sign at least 75 mm wide.

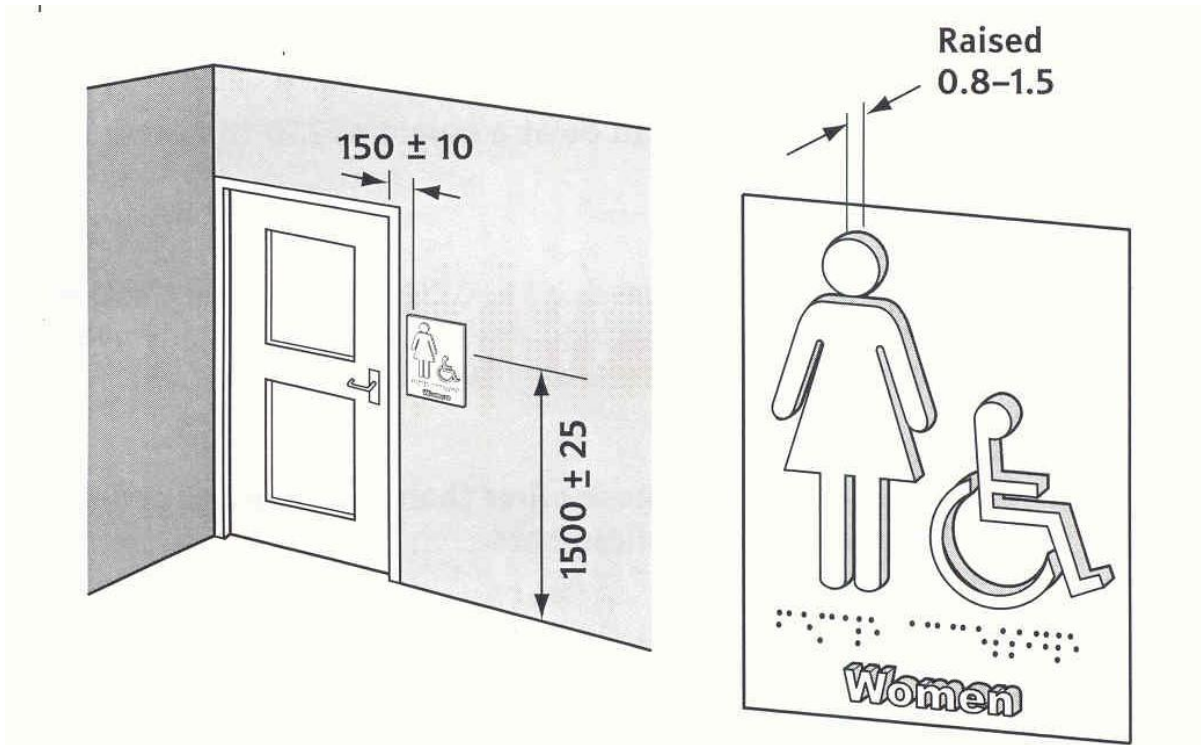


Figure 2 - Location and size of tactile signs