

WASHROOM INFORMATION SHEET

NOTE: Specifications and figures are provided from Accessible Design for the Built Environment, Registered trade-mark of Canadian Standards Association, 2004; Canadian Standards Association, 5060 Spectrum Way, Suite 100 Mississauga, Ontario L4W 5N6. Measurement Scale used: 25.4 mm = 2.54 cm = 1 inch

Individual Washrooms

See Figure 1 on following page.

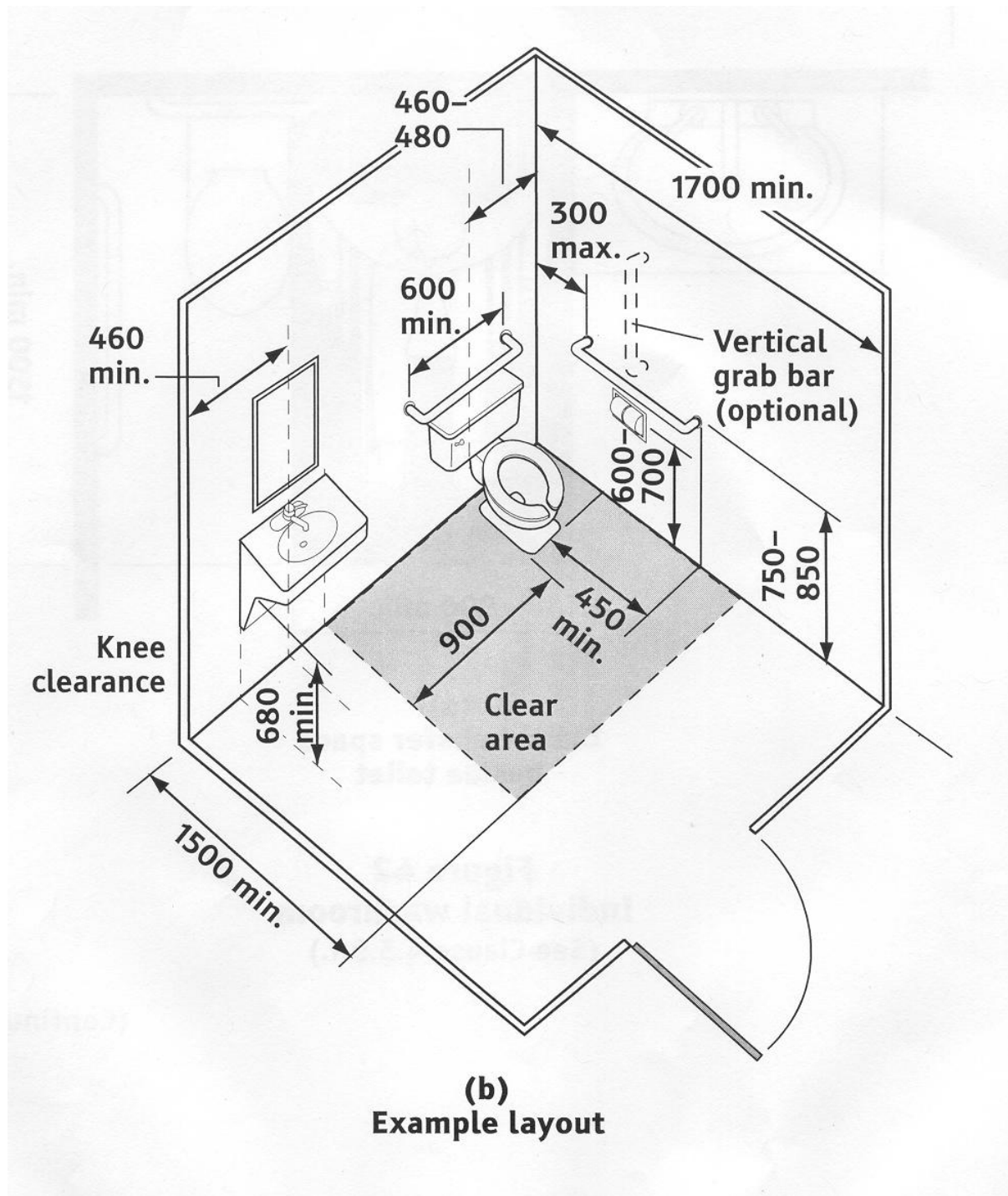
1. An individual washroom consists of a toilet and a lavatory (sink).

- Has a floor area no less than 3.5 m x 3.5 m.
- Has a 900 mm (35 inches) clear space beside the toilet for a lateral transfer.
- An accessible washroom should be identified by the International Symbol of Accessibility.
- A major problem with washrooms is often encountered upon entering them. For example vestibules with a double set of doors can be difficult to negotiate.
- There should be a mirror with its bottom edge not more than 1000 mm (39 inches) from the floor.
- See #2 & #3 below for toilet and lavatory specifications.

2. Toilet fixtures should have:

- The top of the toilet seat between 400 mm (16 inches) and 460 mm (18 inches) from the floor.
- A non spring activated seat.
- A back support available if there is no seat lid or tank.
- The tank top securely attached to the tank.
- The toilet installed between 460 mm (16 inches) and 480 mm (18 inches) from the adjacent wall centreline.
- The flush lever on the transfer side of the toilet, and is automatically controlled.
- Toilet paper should be at side of toilet within reach.

The In Community
WASHROOM INFORMATION SHEET



(b)
Example layout

Figure 1 - Bathroom Layout

3. Toilet Grab Bars should have two horizontal grab bars which:

- Are slip resistant.
- Have a diameter of 30 mm (1 1/4 inches) to 40 mm (1 3/4 inches).
- Have a space of 35 mm (1 3/8 inches) to 45 mm (1 3/4 inches) from the wall where the grab bar is mounted.
- Are mounted on the side wall closest to the toilet, and extend no more than 300 mm (12 inches) from the rear wall and 450 mm (18 inches) from in front of the toilet seat.
- Are mounted on the wall behind the toilet and be at least 600 mm (24 inches) in length.
- Are mounted between 750 mm (30 inches) and 850 mm (33 inches) from the floor.

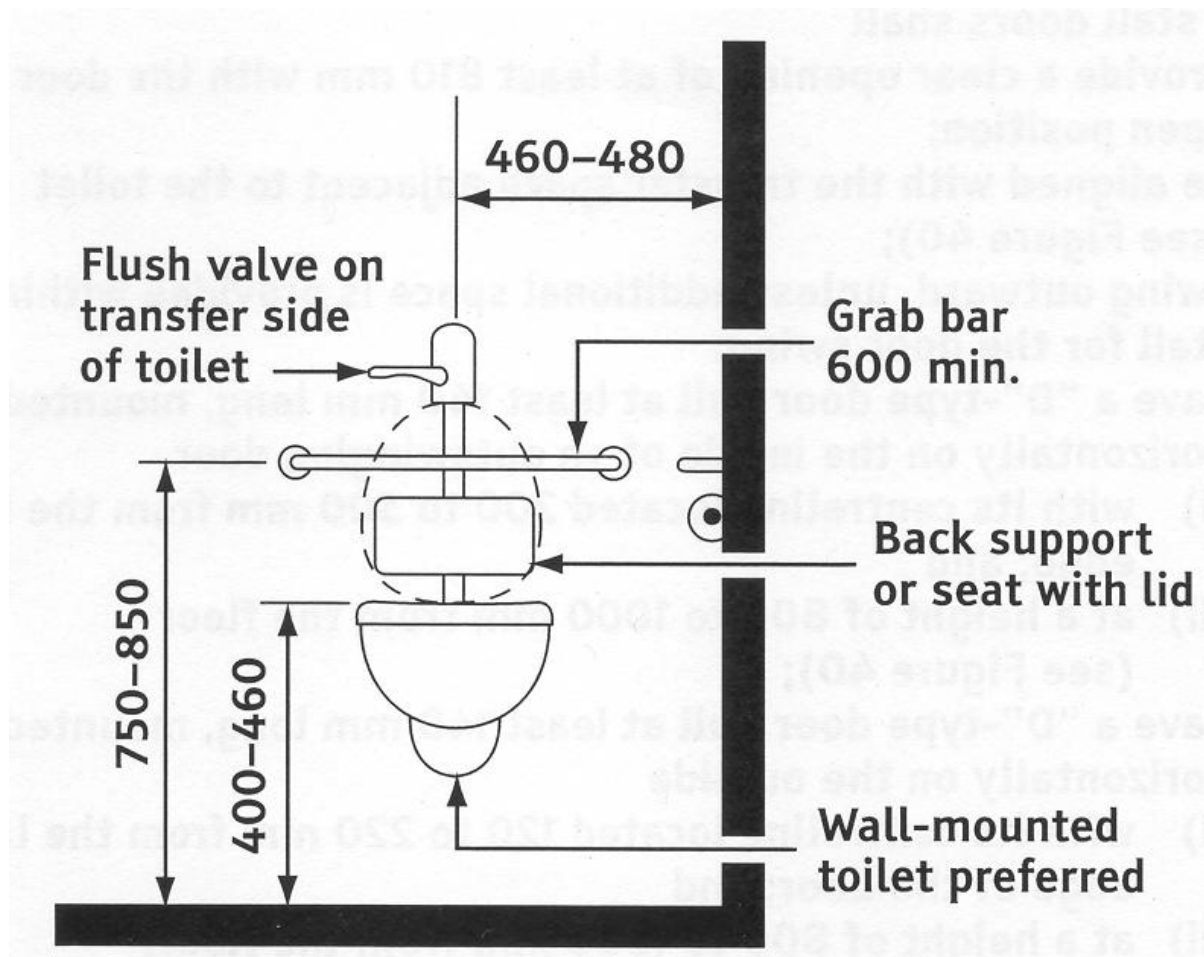


Figure 2 - Toilet Configuration

4. Clearance under a lavatory (sink) is required for any wheelchair access.

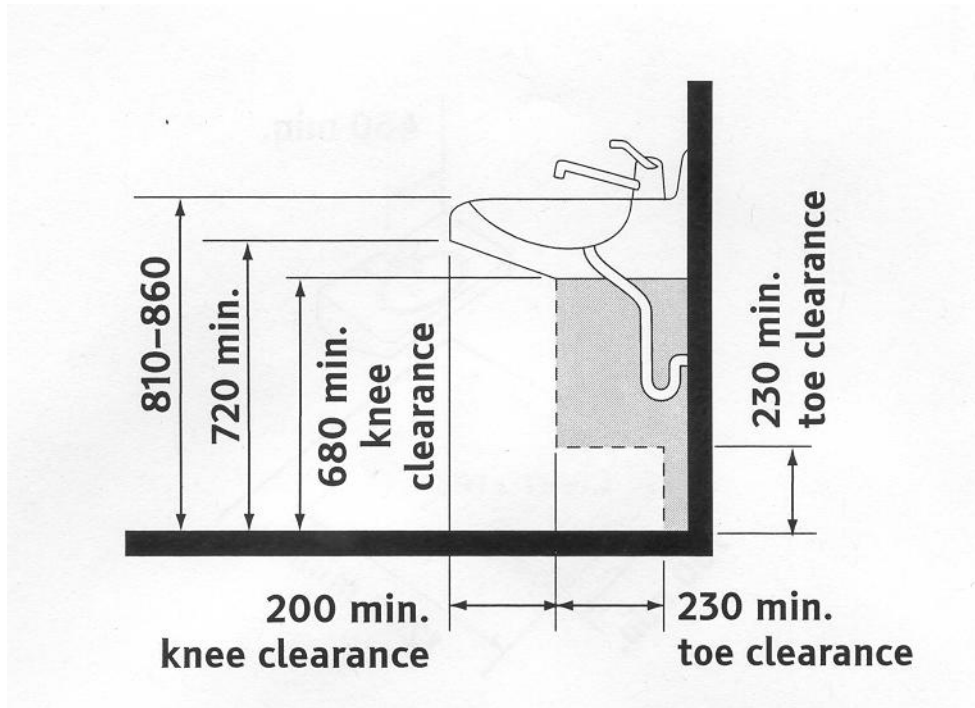
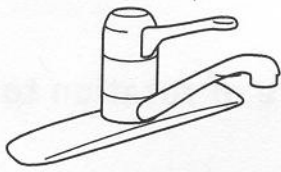


Figure 3 - Lavatory Clearances

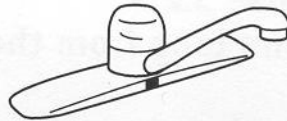
5. Lavatories should:

- Be mounted between 810 mm (32 inches) and 860 mm (34 inches) from the floor.
- If a forward approach is used, a person in a wheelchair requires knee space under the counter, with a minimum of 750 mm (30 inches) width, 480 mm (18 inches) depth and 680 mm (27 inches) height.
- Have a minimum clear floor space of 750 mm (30 inches) wide and 1200 mm (47 inches) deep. (A maximum of 480 mm (19 inches) in depth may be under the lavatory)
- Have any hot water or drainage pipes insulated to prevent any burns to the legs.
- Faucets should have lever style handles, such as the faucet styles shown in Figure 4 on next page.

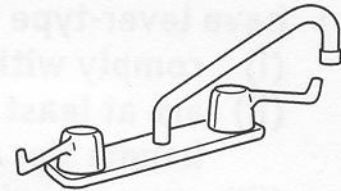
**The In Community
WASHROOM INFORMATION SHEET**



Single lever handle

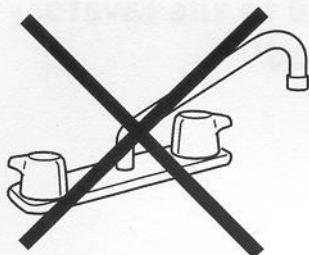


Automatic faucet



Long lever handles

Acceptable



Short lever handle



Push operated

Not acceptable

Figure 4 - Bathroom Faucets

6. Bathtubs Should:

- Have a clear floor space of 750 mm (30 inches) along the side of the bathtub.
- Have Grab Bars which:
 - Are slip resistant.
 - Have a diameter of 30 mm (1 1/4 inches) to 40 mm (1 1/2 inches).
 - Have a space of 35 mm (1 3/8 inches) to 45 mm (1 3/4 inches) from the wall where the grab bar is mounted.
 - Are at least 1200 mm (47 inches) in length and located horizontally along the length of the bathtub and have a clear space from the bathtub rim of 180 mm (7 inches) to 280 mm (11 inches).
 - Are at least 1200 mm (47 inches) in length and located vertically along the foot end of the bathtub and have a clear space from the bathtub rim of 180 mm (7 inches) to 280 mm (11 inches).

The In Community WASHROOM INFORMATION SHEET

- Not have enclosures that obstruct any controls, interfere or create a barrier for an individual transferring to or from a wheelchair, or have tracks mounted on the bathtub rim.

7. Faucets and other bathtub controls should:

- Be no more than 450 mm (18 inches) from the bathtub rim.
- Have hand-operated controls that are operable with one hand, and require no tight grasping, pinching or twisting to operate.

8. Shower Heads should:

- Have both a hand held style and a fixed position style. (Mountable on a vertical bar)
- Have mounting which does not interfere with grab bars.
- Have a minimum hose length of 1500 mm (59 inches).

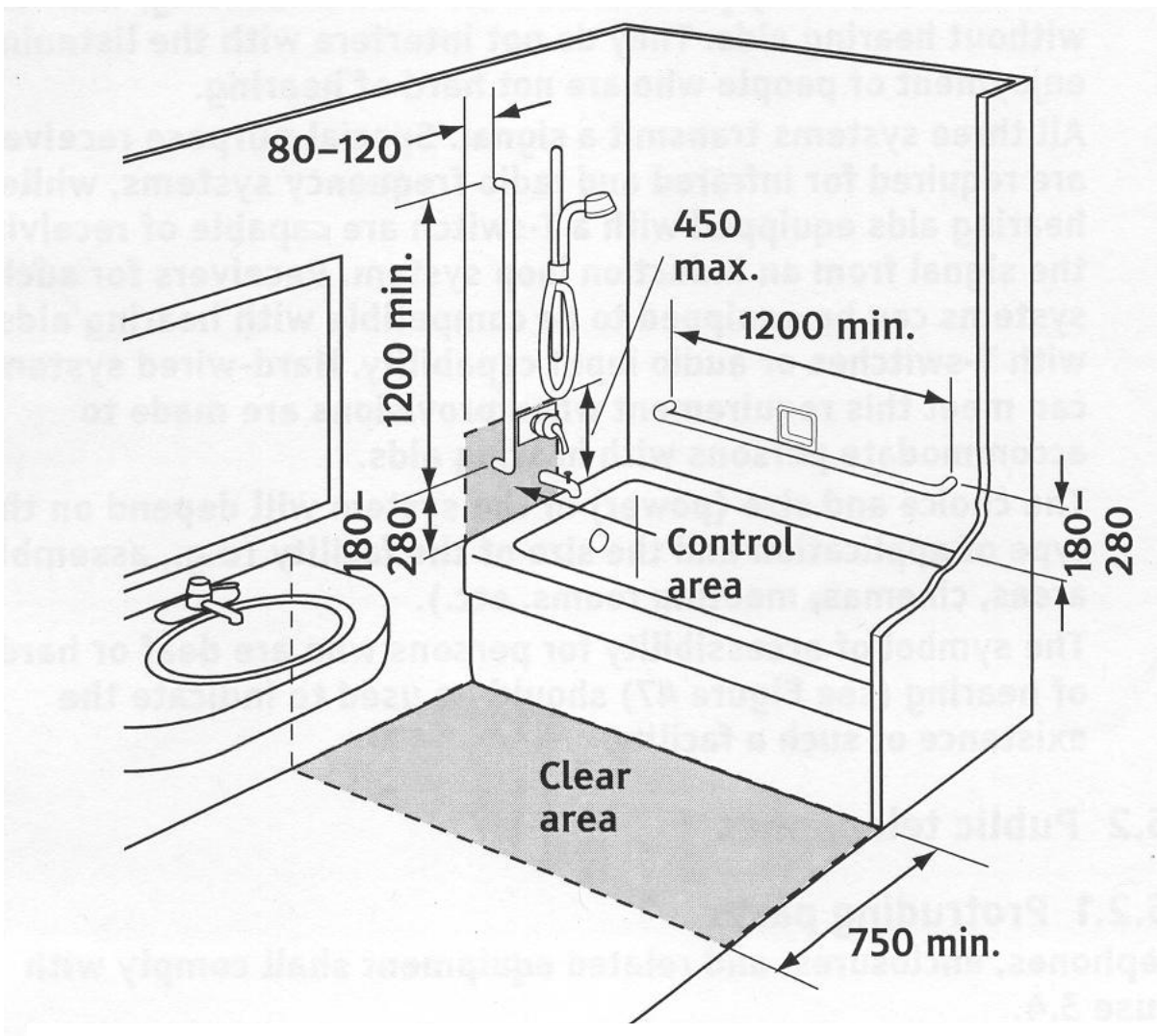


Figure 5 - Bathtub area and grab bars

9. Roll-in Shower Stalls should:

- Have minimum interior dimensions of: 750 mm (30 inches) x 1500 mm (59 inches).
- Have a minimum clear floor space of 900 mm (35 inches) x 1200 mm (47 inches).
- Contain Grab Bars which:
 - Are slip resistant.
 - Have a diameter of 30 mm (1 1/4 inches) to 40 mm (1 1/2 inches).
 - Have a space of 35 mm (1 3/8 inches) to 45 mm (1 3/4 inches) from the wall where the grab bar is mounted.
- Have one L-shaped bar or two grab bars in an L-shape configuration. This L-shaped bar should be a minimum of 750 mm (30 inches) x 1000 mm (40 inches) in length.
- Have controls no more than 1200 mm (47 inches) from the floor.
- Have curbs no more than 6-13 mm (1/4 - 1/2 inch) high with a beveled slope of 1:2.

See Figure 6 on following page.

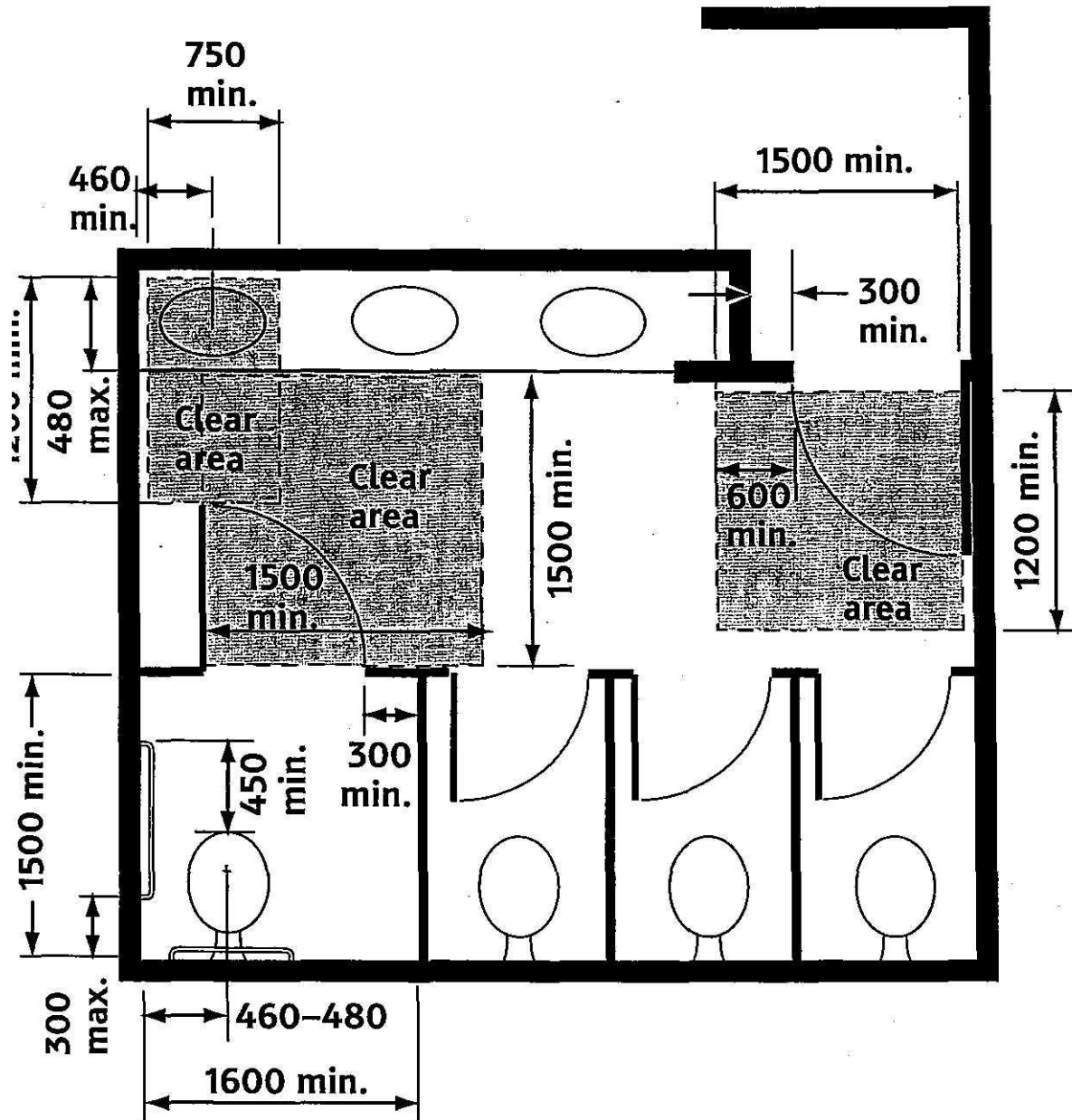


Figure 7 - Example of a washroom layout